



# Portable Measurement

*QCT are pleased to introduce a range of portable measuring arms, using carbon fibre technology and integrated with our user friendly geometric measuring software as standard.*



**Inspecta**  
**Measuring Arm**

# Inspecta

## Portable Measuring Arm

The **Inspecta** measuring arm is a top quality portable arm for applications where accuracy is a must.

The arm is available in two sizes and is supplied with our user friendly inspection software.

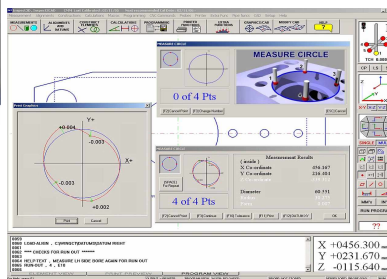


### Standard Features

- Quality portable measuring arm
- Measuring range (diameter): 2600 mm or 3200 mm
- Portable: lightweight
- **Inspect<sup>3</sup>D** Geometric Software
- Laptop Computer
- Stylus
- Mounting Plate with Calibration Point
- 1 Year Warranty

### Options

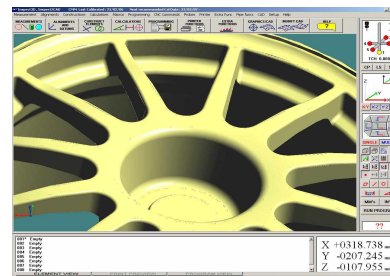
- Inspection direct to CAD (**Inspect<sup>2</sup>CAD** software)
- Carry case
- CRK (Component Relocation Kit)
- Magnetic Base
- Two button touch probe adaptor with Renishaw LP2 Probe, stylus & reference sphere
- Fixed Height Tripod (91 cm)
- Adjustable Height Tripod (71-107 cm)



### Dimensions & Capacity

Model	Range (diameter)	Repeatability Test on Sphere	Volumetric Accuracy
Inspecta 2600	2600 mm	± 0.035 mm	± 0.060 mm
Inspecta 3200	3200 mm	± 0.050 mm	± 0.090 mm

(2sigma)



**Quality Control Technology Ltd**  
 Unit 8 Gainsborough Close, Long Eaton Nottingham NG10 1PX  
 Tel: 0115 946 9111 Fax: 0115 946 9222 Email: sales@q-c-t.demon.co.uk  
 Website: www.q-c-t.demon.co.uk

All specifications listed in the brochure are subject to change without notice.